

F I N N E R T I

FINANCE ♦ DEVELOPMENT ♦ PROPERTY

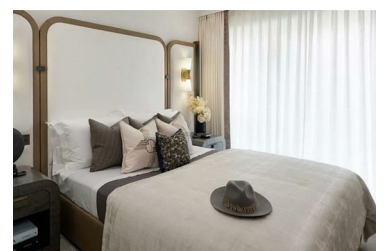
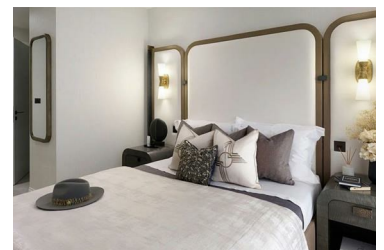
**Chelsea Creek Park
Street
Chelsea
SW6 2ES**



NEWLY RELEASED UNITS - READY TO MOVE IN THIS SUMMER

Chelsea Creek is home to luxurious riverside apartments that bring a characteristically European style of waterside living to Central London. A stunning location with tree-lined avenues and meandering waterways offer a refreshingly unique urban lifestyle. Just moments from your doorstep you will find the local bars, restaurants and cafes of Imperial Wharf and shop endlessly on the nearby King's Road, Sloane Street or Westfield.

- 2 bed, 2 bath
- 1st floor
- 892 sq ft

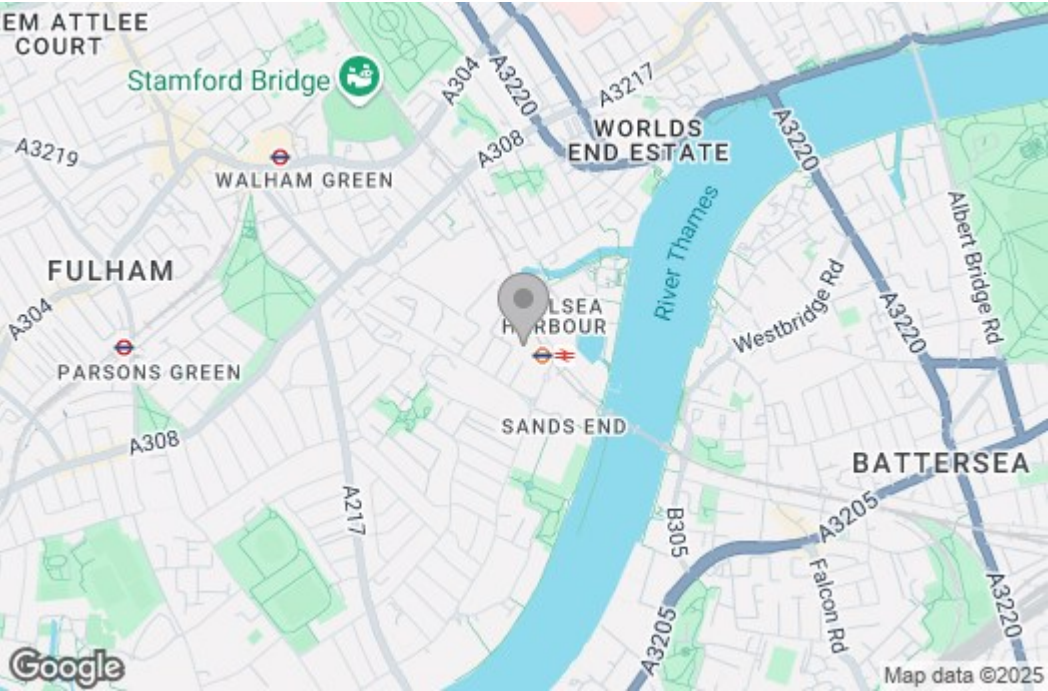


Asking price £1,295,000

130 Old Street, London, EC1V 9BD

t: 020 7078 7938 ♦ e: info@finnerti.com ♦ finnerti.com

Area Map



Energy Efficiency Graph



These particulars, whilst believed to be accurate are set out as a general outline only for guidance and do not constitute any part of an offer or contract. Intending purchasers should not rely on them as statements of representation of fact, but must satisfy themselves by inspection or otherwise as to their accuracy. No person in this firms employment has the authority to make or give any representation or warranty in respect of the property.